



**AUTOMATION
& FACTORY
SOLUTIONS**

OnSite Services

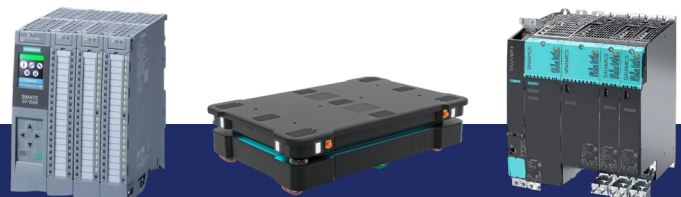


Your total solutions provider!

GCG excels in catering to our clients' hardware requirements with unparalleled expertise. Now, we're expanding our horizons to become your ultimate solution provider. Whether you need a replacement part or are embarking on a completely new project, you can count on us for assistance. Entrust us with your challenges, and we'll handle them with precision and expertise. Backed by a robust team of engineers and integration partners, we are equipped to tackle nearly any project.

Services Offered:

- ▶ **Automation Support**
 - PLC support and code conversion
 - Hardware upgrades for faulty or legacy components
 - HMI support and migration
 - Siemens PLC training
 - Banner wireless solutions
- ▶ **Motion Support**
 - VFD and Servo commissioning
 - PLC to drive communication solutions and graphical confirmation of motion performance
 - Fault cause analysis and recommended solutions
 - Hardware upgrade solutions and start-up
 - Troubleshooting method and tools training
- ▶ **Mechanical Installs**
 - WireCrafter's
 - Husky
 - Transair
 - 80/20
 - & More
- ▶ **Spare Parts**
 - Identify Critical Spares
 - Rebuild / Repair / Refurbish
- ▶ **Robot Integration & Repair**
 - Robot sizing and simulation which helps customers determine ROI on a given project through cycle time analysis
 - End of Arm Tooling (EAOT) development and testing/confirmation
 - Full robot cell concept and design with ability to provide safety devices/controls, hard guarding, conveyors, vision guidance, etc.
 - Assistance with on-site robot deployment, programming training, full system training
- ▶ **MiR Maintenance and Repair**
 - MiR Extended Care Plans
 - OnSite and in-house repair
 - Training
- ▶ **Condition Monitoring**
 - Preventative Maintenance
 - Prevent Unplanned Downtime
 - CM provides real-time data for better asset management and maintenance planning.
 - Optimize Spare Parts Inventory



gogcg.com/automation
800.228.2790